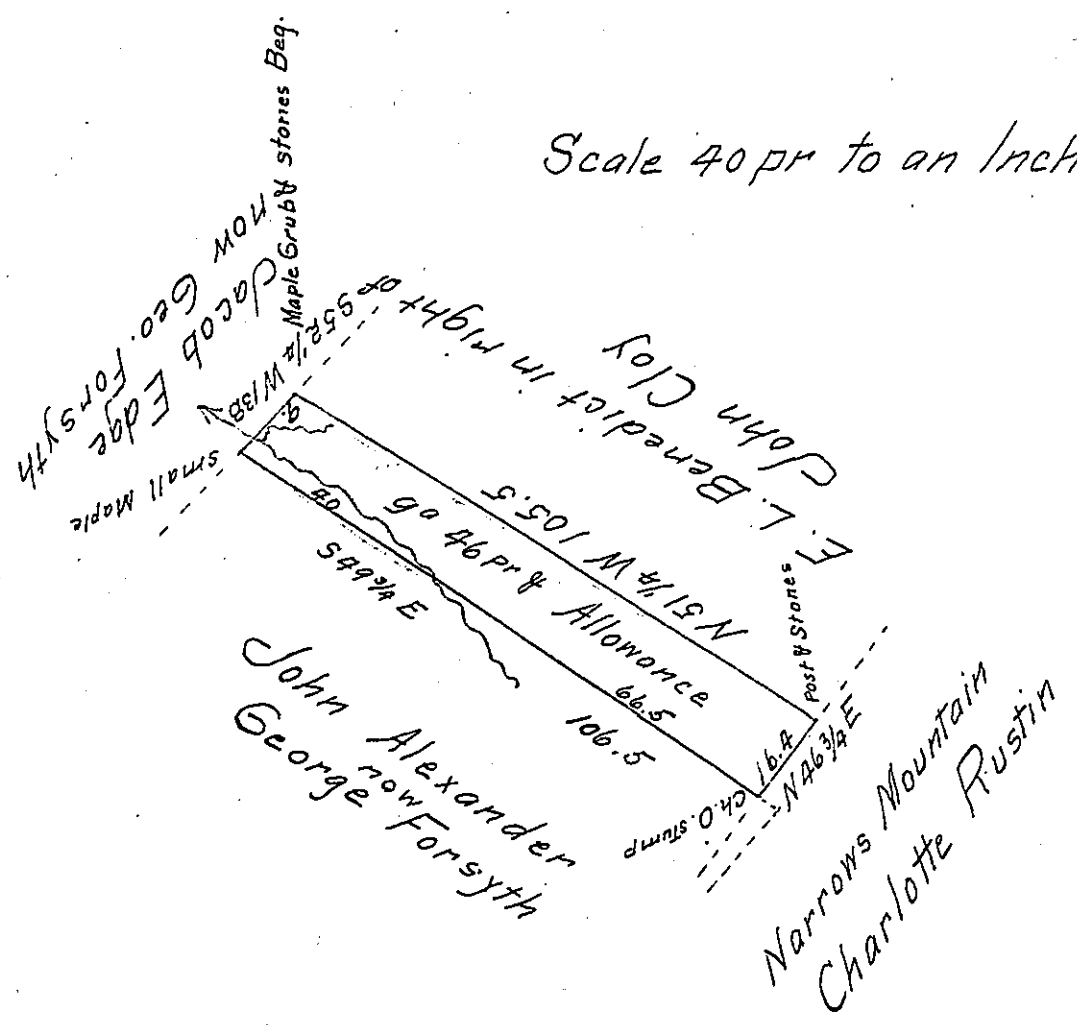


Scale 40 pr to an Inch



A Draught of 99 46 perches of land with allowance of 6 per Cent for Roads &c. Situate in Perry Township Mifflin County Penna. Surveyed June 9th 1856 in pursuance of a Warrant to Barnard Everhart dated May 8th 1856

To J. Porter Brawley Esq John Swartzell C.S.
 Surveyor General of Penna

IN TESTIMONY that the above is a copy of the original remaining on file in the Department of Internal Affairs of Pennsylvania, made conformably to an Act of Assembly approved the 16th day of February 1833, I have hereunto set my hand and caused the Seal of said Department to be affixed at Harrisburg, this 13th day of January 1903

Henry Houck
 Secretary of Internal Affairs.